

EDGE SPOT

Adjustable Spot Head



FEATURES

Edge Spot seamlessly attaches to the EDGE knife-edge extrusion system using a magnetic attachment solution. Lockable screw mounting option is also available.

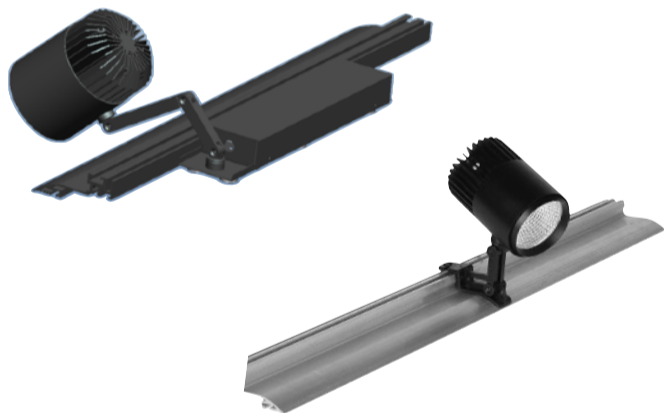
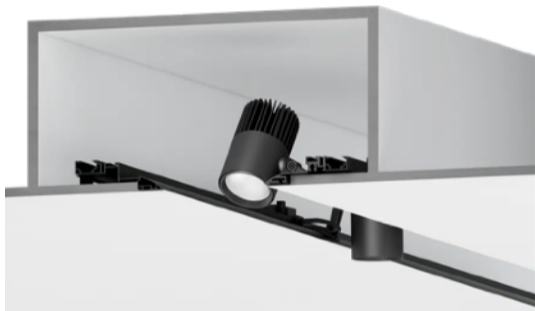
This versatile spot head has a full range of mobility and is field changeable, allowing for placement adjustments throughout EDGE extrusion.

Offered in 2700K to 6000K and Warm Dim (3000K-1800K)

Available in 10W, 20W, 25W, 30W, and 40W option and delivers up to 3500 lumens.

See EDGE PROFILE and SLOT CHANNEL spec sheet

SPECIFICATIONS



Input Voltage	100-277V AC
Wattage	10W - 40W
Delivered Lumens	750LM - 3500LM
CCT	2700K-6000K, D2W (3000K-1800K)
CRI	80Ra & 90Ra
Beam Angle	15°/24° / 38°
Tilt / Rotation	Horizontal 90° Vertical 180°
Dimming	Trial / 0-10v (100%-1%)
Lamp Life	50,000Hr
Environment	Dry / Damp
Operating Temp	20° F - 40° F

Ordering Code:

Series	Size	CCT	Optic	Finish	Accessory	Base	Driver
EDSP	10W 737Lm	27K 2700K	15D 15 Degree	WH White	H Honeycomb Lens	M1 Adj w/ magnetic base	ELV ELV/TRIAC Phase Cutting 3%
	15W 1142Lm	30K 3000K	24D 24 degree	BL Black	S Insulation Contact	M2 Retracting Arm w / magnetic base	D10 0/1-10V (100% - 1%)
	20W 1669Lm	35K 3500K	38D 38 degree			S1 Retracting Arm w / screw base	DAL DALI-2 Dim to off 0.1%
	25W 2114Lm	40K 4000K					P01 Premium Driver 0.1% LOG
	30W 2548Lm	WD Warm Dim					
	30W 2548Lm	TW Tunable White					
	40W 3397Lm						



EDGE SPOT

Adjustable Spot Head



Dimensions and Mounting Options

10W

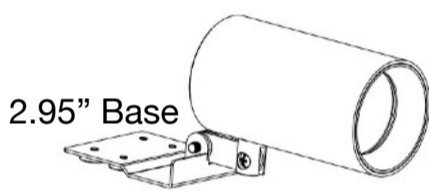
15W

20W

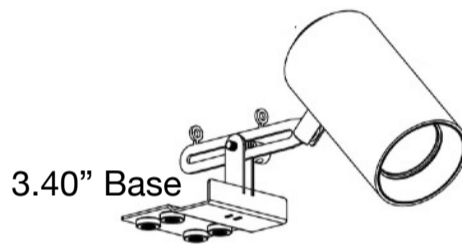
25W

30W

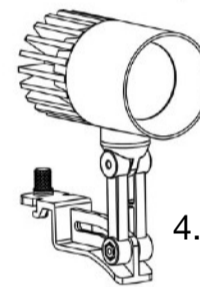
40W



Flat adjustable arm with magnetic attachment



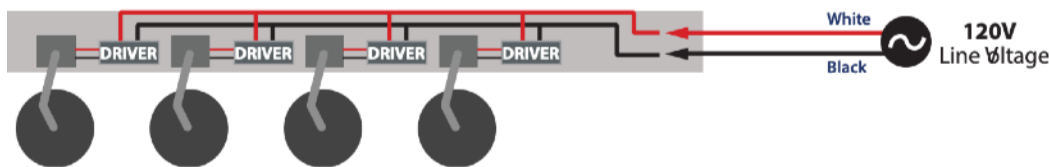
Retractable adjustable arm with magnetic attachment



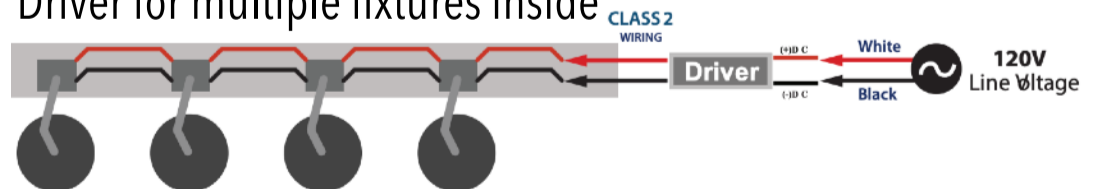
Retractable adjustable arm with lockable screw attachment

Driver wiring options

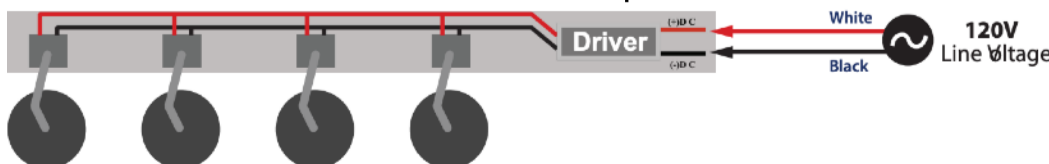
Driver per fixture inside extrusion



Driver for multiple fixtures inside



Remote driver outside excursion up to 50'



EDGE SPOT

Adjustable Spot Head



Installation

