

# A~CYLINDER



Full range of cylinders offered in round and square.  
 3 types of installation (pendant, surface and wall mount) in both adjustable and fixed options.  
 Adjustable offers a 350 Horizontal and 30 degree vertical adjustment.  
 Surface and pendant mounting options available for both interior and exterior applications (refer to IP65 Spec Sheet for exterior options).  
 Anti-glare design with low UGR <19 even for high output series. Low output has UGR <10 and shielding angle of 25 degree. High output has UGR <17 and shielding angle of 40 degree.  
 High power range from 5W to 90W. Suitable for applications up to 60 feet. Custom wattages available  
 Certain sizes are available with internal emergency battery backup.  
 Multiple installation options offered.

## SPECIFICATIONS



Input Voltage	100-277V AC
Wattage	10W - 90W
Delivered Lumens	800Lm-7650Lm
Efficacy (LPW)	85+Lm/W
CCT	27K, 30K, 35K, 40K
CRI	>90Ra
Beam Angle	15°, 24°, 36°, 45°, 60°
UGR	<19
Dimming	Phase & 0-10v (100%-5%)
Lamp Life	50,000Hr
Environment	Dry/Damp IP40
Operating Temp	-4° F - 131° F


3-Step Color Binning Standard  
 2-Step Color Binning Available

### Ordering Code:

Series	Mounting	Shape	Suspension	Wattage		CCT		Optic		Accessory Lens	Shell	Reflector
<b>A-CYL</b>	<b>P</b> Pendant Mount	<b>RD</b> Round	<i>Leave blank if surface mounted</i>	<b>6W</b> 510LM	<b>40W</b> 3400LM	<b>27K</b> 2700K	<b>15D</b> 15 Degree	HC Hexcell Louver	<b>WH</b> - White	<b>W</b> - White		
	<b>S</b> Surface Mount	<b>SQ</b> Square	<b>AC##</b> Cord/AC Cable	<b>10W</b> 850LM	<b>50W</b> 4250LM	<b>30K</b> 3000K	<b>24D</b> 24 Degree	LS Linear Spread	<b>BL</b> - Black	<b>B</b> - Black		
	<b>PT</b> Pendant Trimless	<b>AJ</b> Adjustable	<b>RS##</b> Ridgid Stem	<b>15W</b> 1275LM	<b>60W</b> 5100LM	<b>35K</b> 3500K	<b>36D</b> 36 Degree		<b>SV</b> - Silver	<b>C</b> - Chrome		
	<b>ST</b> Surface Trimless		<b>SV##<sup>1</sup></b> Swivel Stem	<b>20W</b> 1700LM	<b>90W</b> 7650LM	<b>40K</b> 4000K	<b>45D</b> 45 Degree		<b>CS</b> - Custom	<b>G</b> - Gold		
			<b>##</b> = inches	<b>30W</b> 2550LM			<b>60D</b> 60 Degree			<b>N</b> - Black Nickel		

Special Installation	Dimming	Emergency Backup
<i>Leave blank if standard</i> <b>SL##<sup>2</sup></b> Slanted Ceiling Adapter <b>CD##<sup>3</sup></b> Conduit Adapter <b>AJC</b> Adjustable Canopy ## = ceiling slant angle	<b>10</b> - 0-10V <b>TR</b> - Triac/Phase	<b>EM06<sup>4</sup></b> - 6W/90 mins <b>EM10<sup>5</sup></b> - 10W/90 mins  <i>Internal EMBB for most sizes</i>

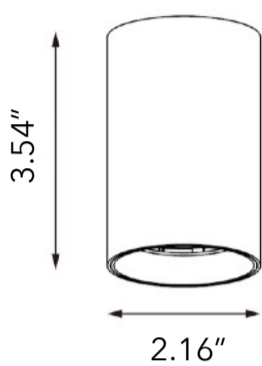
<sup>1</sup>Adjustable swivel stem for sloped ceilings  
<sup>2</sup>Ceiling slant angle will need to be specified  
<sup>3</sup>Specify the number of conduit feeds (1-4)  
<sup>4</sup>Internal EMBB/cylinder body will be min 6" in width regardless of wattage  
<sup>5</sup>EM10 is remote only

 Wall Mount Available (see spec sheet).  
 Up / Down options  
 IP20 & IP66 options

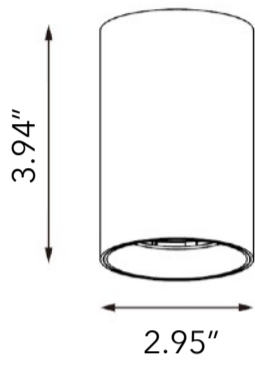




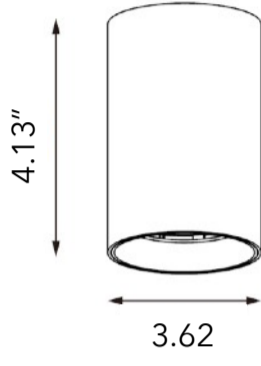
Round Options



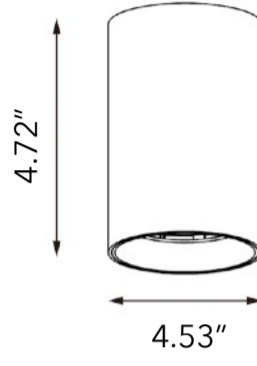
6W



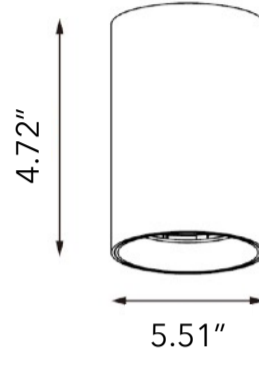
10W/15W



20W

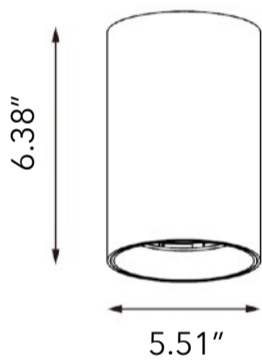


30W

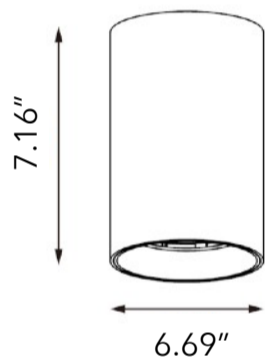


40W

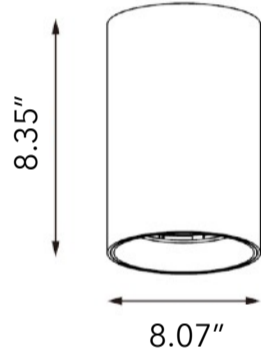
Internal EMBB minimum size



50W



60W

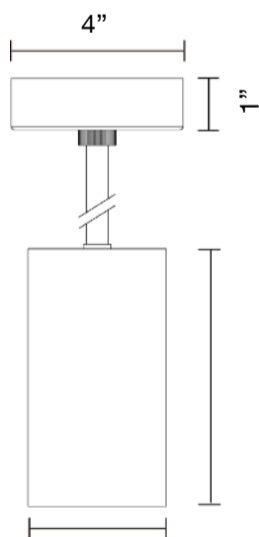


90W

All cylinders can be customized in size (width by height).

Consult factory for custom size.

Please note, depending on driver availability, the cylinder size may change slightly then what is shown.



Cylinder body is the same size for pendant mount

Standard cable length - 5'

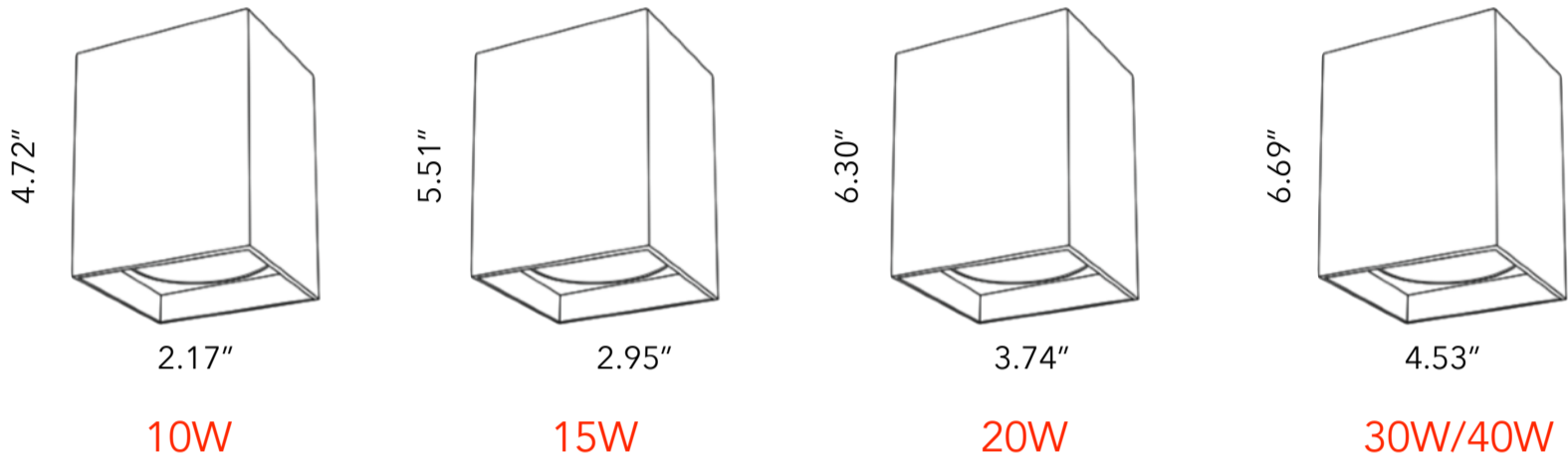
Cable length can be customized or stem mounted for additional cost.



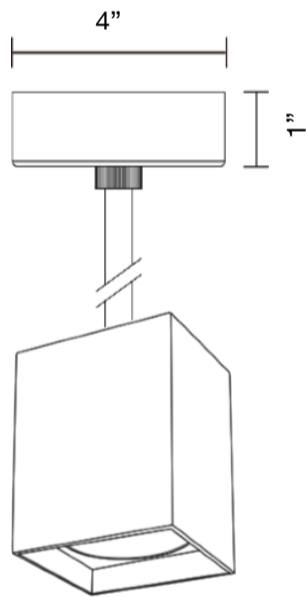
# Λ~CYLINDER

# BINA COMPANY

## Square Options



For higher wattages,  
consult factory for  
cylinder size.



Cylinder body is the same size for pendant mount

Standard cable length - 5'

Cable length can be customized or stem mounted for additional cost.

All cylinders can be customized  
in size (width by height).

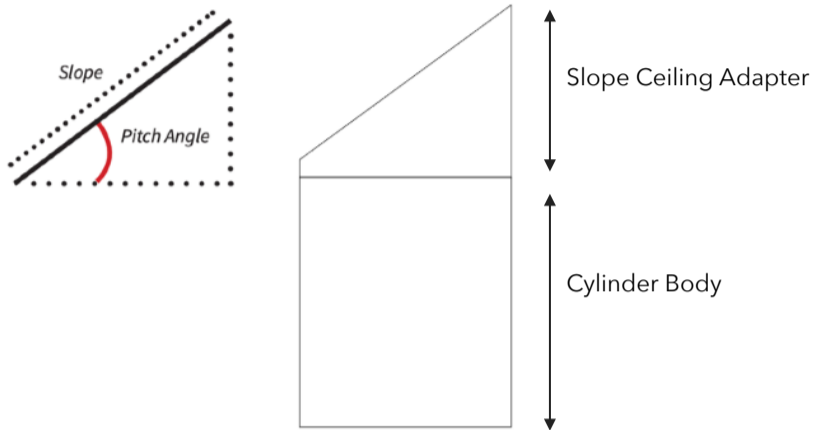
Consult factory for custom size.

*Please note, depending on driver availability, the  
cylinder size may change slightly then what is shown.*

# Λ~CYLINDER



## Sloped Ceiling



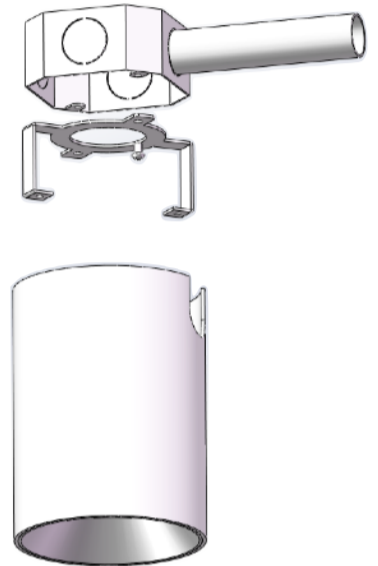
Slope ceiling adapter will be determined by the ceiling pitch angle. Adapter works with all cylinder sizes.

## Conduit Feed

Conduit feed cylinder will fit over any standard 4" octagonal Jbox.

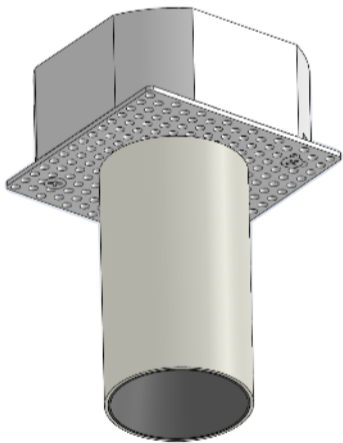
Works with all cylinder wattages and sizes. 6W-20W cylinder will have a minimum body width of 4.25"

Can work with up to 4 conduit feeds.



Min 4.25" width

## Trimless Option

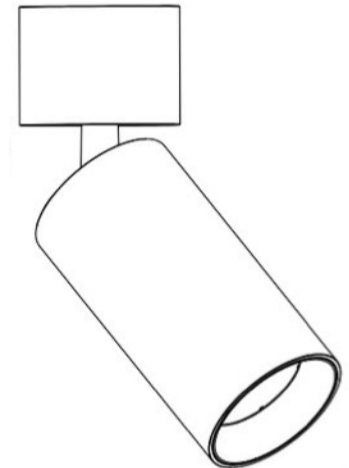


Trimless option is for cylinders that have a width of less than 4" and below.

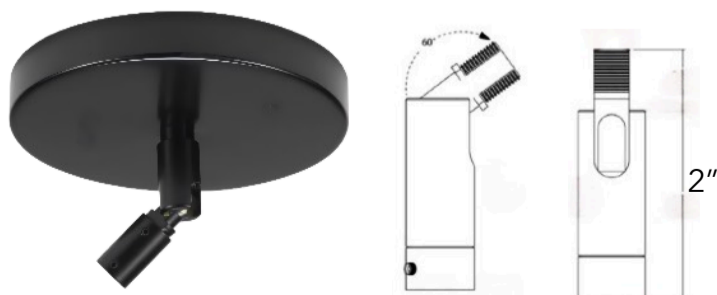
Also available in pendant mount.

## Adjustable Canopy

Adjustable canopy is available in all wattages and can be IP54 Rated.



## Swivel Stem Canopy



Specify rigid stem (overall) length.



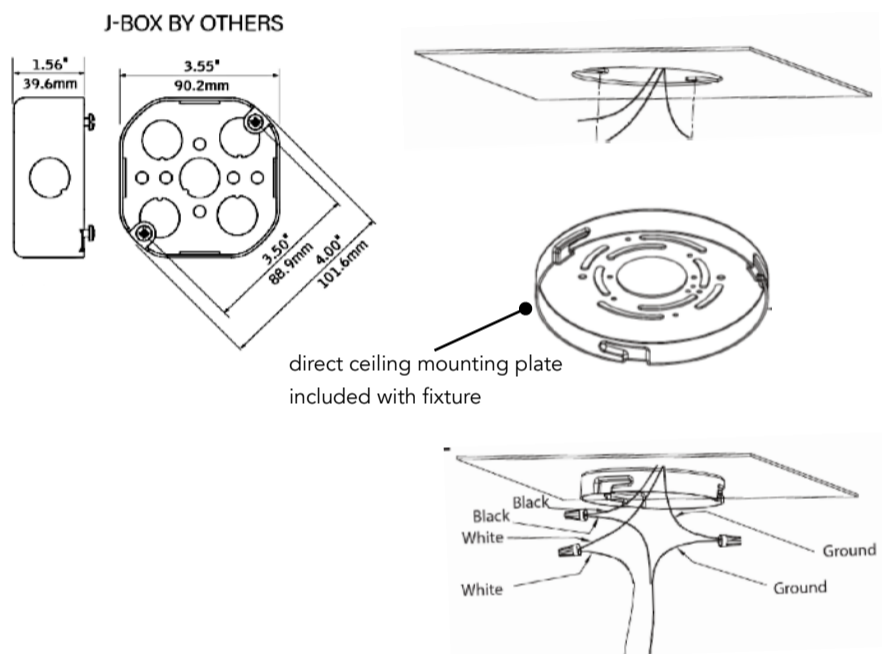


Round Series

Mounting Options

### New Construction / Remodel - Surface Mount

Direct ceiling mount with integral mounting plate and driver



### Pendant Mount

