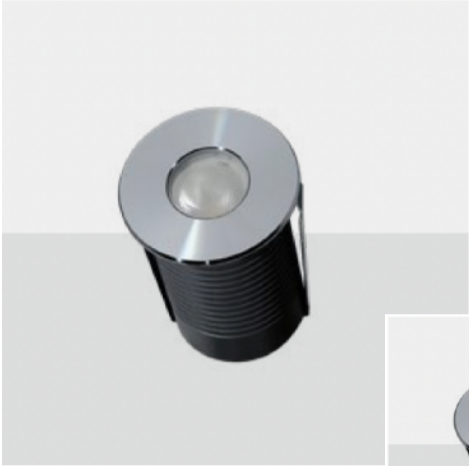


PROJECT:

TYPE:

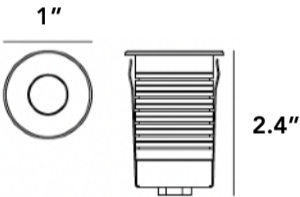
QTY:

MOLE

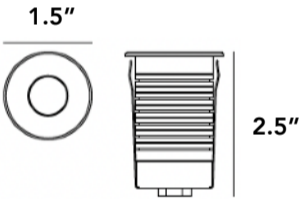


Mini Size In-grade Uplight
Easy Installation - all in-grade lights can be installed directly without the need to disassemble the front cover
Marine grade stainless steel 316L front cover
IP67 water-stopper and plug socket connectors
Amplified recessed sleeve

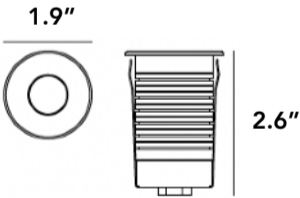
SPECIFICATIONS



1x1.5W =136LM



1x1.5W =145LM



1x2W =150LM

Input Voltage	24DC
Power Supply	Remote
LED	OSRAM / NICHIA
CCT	2000K, 2700K, 3000K, 4000K, 6000K
CRI	>80Ra
Housing	Die-casting grey powder coated aluminum
Front Cover	Hard chrome plated stainless steel forged molding AISI 316L
Light Window	Step tempered glass T=7mm
Lens	Optical lens efficiency >85%
Environment	IP67
Operating Temp	-4° F - 104° F
IK Rating	IK03

Ordering Code:

Series		Trim		CCT		Optic		Accessory		Driver		Input Voltage		
Mole	27	1"	RD	Round	20K	2000K	10	9 degree	DF	Diffused	NON	Non Dim	24V	24V
	38	1.5"			27K	2700K	15	15 degree			TR	Triac		
	45	1.9"			30K	3000K	20	20 degree			D10	1-10V		
					40K	4000K	30	30 degree			DALI	DALI		
					60K	6000K								
					1x.5W =25LM									

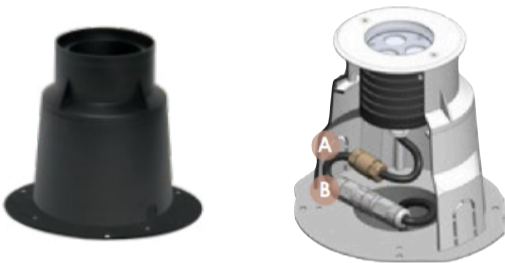


MOLE

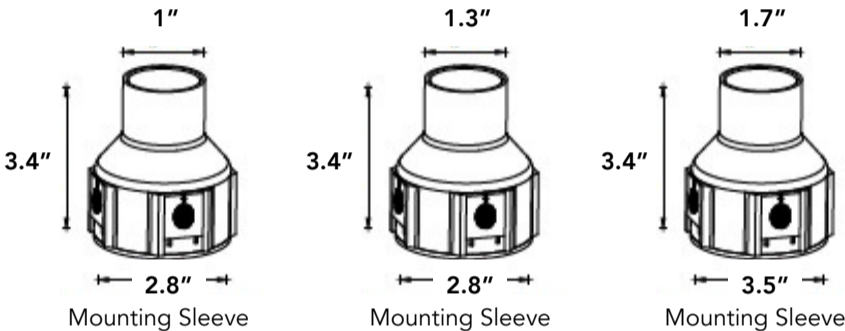


Features

Amplified recessed sleeve



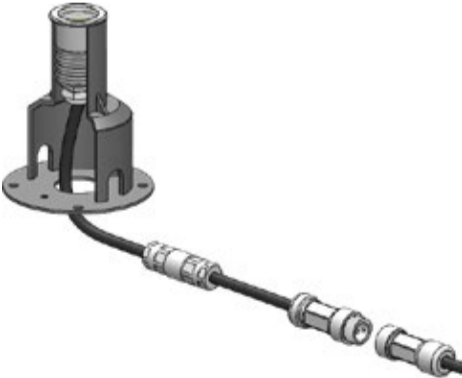
- A IP67 Water-Stoper
- B IP67 Connector



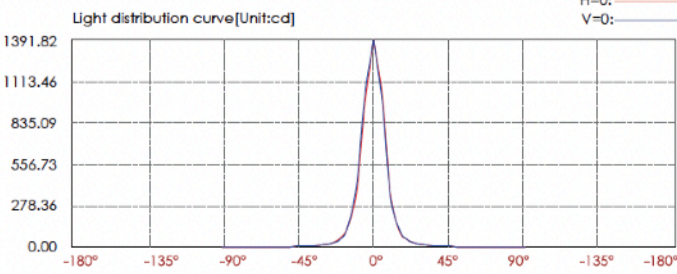
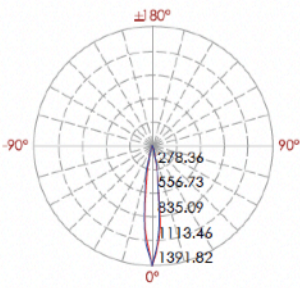
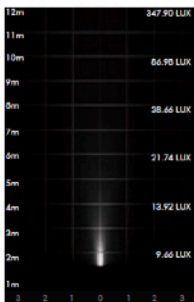
IP-67 water-stopper and optional IP-67 plug socket



- A **Water-Stopper(Included)**
A IP-67 water-stopper is added in the end of luminaires as standard assembly which is also an important system for water resistance.
- B **IP67 Jiffy quick plug/socket connector(Optional)**
A IP-67 connector is as an optional assembly and ensures that water vapor will not enter into luminaires directly.



PHOTOMETRIC



Illuminance at a distance			
Center beam LUX	Beam width V	Beam width H	
2m	347.90 LUX	0.5m	0.5m
4m	86.98 LUX	1.0m	1.0m
6m	38.66 LUX	1.5m	1.6m
8m	21.74 LUX	2.0m	2.1m
10m	13.92 LUX	2.6m	2.6m
12m	9.66 LUX	3.1m	3.1m
Ver.Spread:14.6		Horiz.Spread:14.9	

PROJECT:

TYPE:

QTY:

MOLE

BINA COMPANY

Installation

Easy Installation - all in-grade lights can be installed directly without the need to disassemble the front cover.

