

ESCORT



Step & Wall Light



Recessed step/wall light with a screwless design faceplate made out of chrome-plated 316# stainless steel.

The faceplate securely clips into the housing without the use of screws.

Housing/mounting sleeve features metal brackets on the bottom preventing it from shifting while pouring the concrete. This allows for an easy installation.

IP65 Rated.

SPECIFICATIONS



Smooth
SM72 - 26LM
SM100 - 126LM



Louvered
LV100 - 50LM



Stepped
ST72 - 25LM
ST100 - 103LM

Input Voltage	24V DC / 120V
Wattage	3.4W/ 6.8W
Delivered Lumens	26LM - 126LM
CCT	2000K, 3000K, 4000K
Material	Die-cast powder coated aluminum
IK Rating	10
Dimming	Phase & 0-10v (100%-5%)
Lamp Life	50,000Hr
Environment	IP65 / cable gland IP67
Operating Temp	-4° F - 104° F



Dark Grey #7037



Silver Grey #9022



Black #9005

Ordering Code:

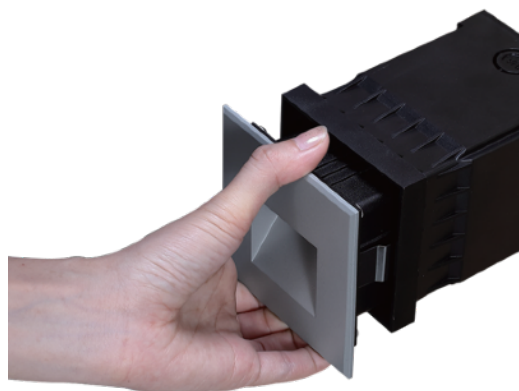
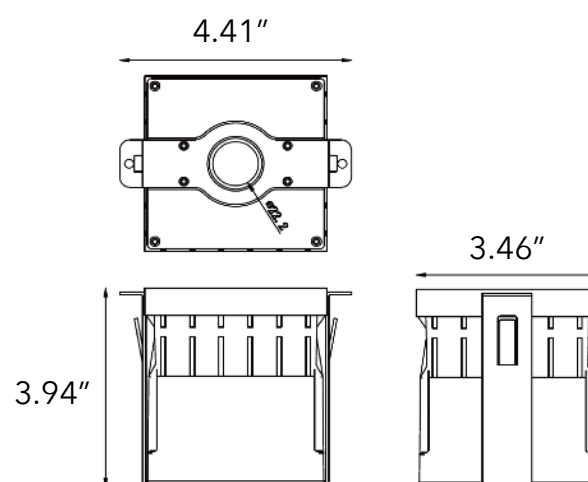
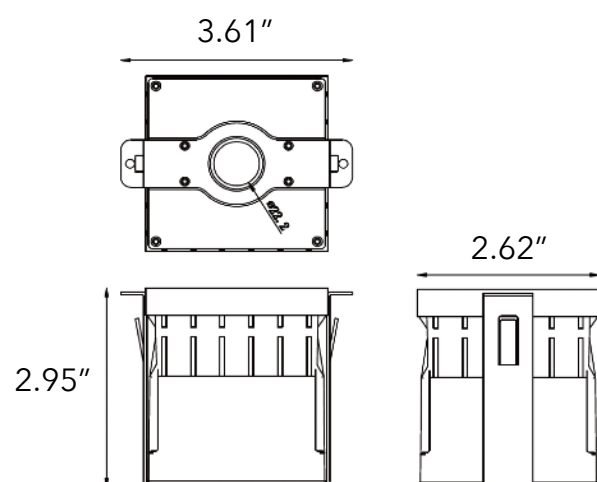
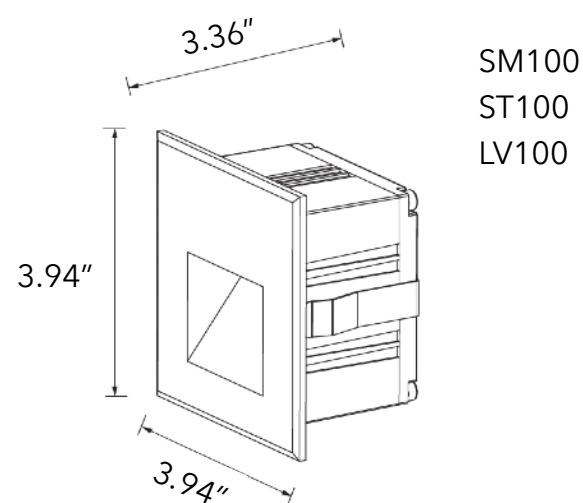
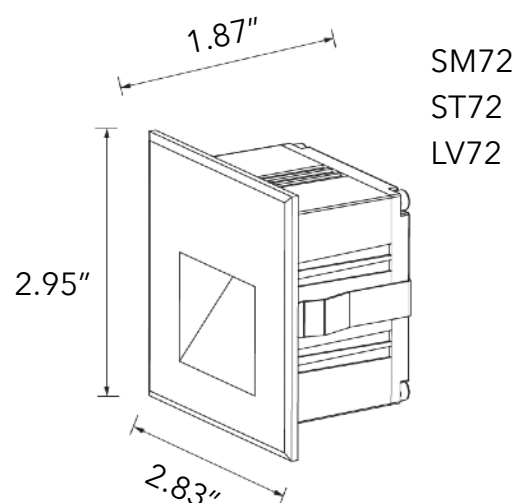
Series		Style	CCT		Finish		Dimming		Voltage	
Escort	SM72	Smooth 72	20K	2000K	BK	Black	ELV	ELV/TRIAC Phase Cutting 0/1-10V DALI-2	24V	24V DC
	SM100	Smooth 100	30K	3000K	DG	Dark Grey	D10		120V	120V AC
	ST72	Stepped 72	40K	4000K	SG	Silver Grey	DAL			
	ST100	Stepped 100								
	LV100	Louvered 100	60K	6000K						



ESCORT

BINA COMPANY

MOUNTING SLEEVE



Clip in design



Mounting sleeve features bracket on bottom to prevent the housing from shifting while pouring the concrete.