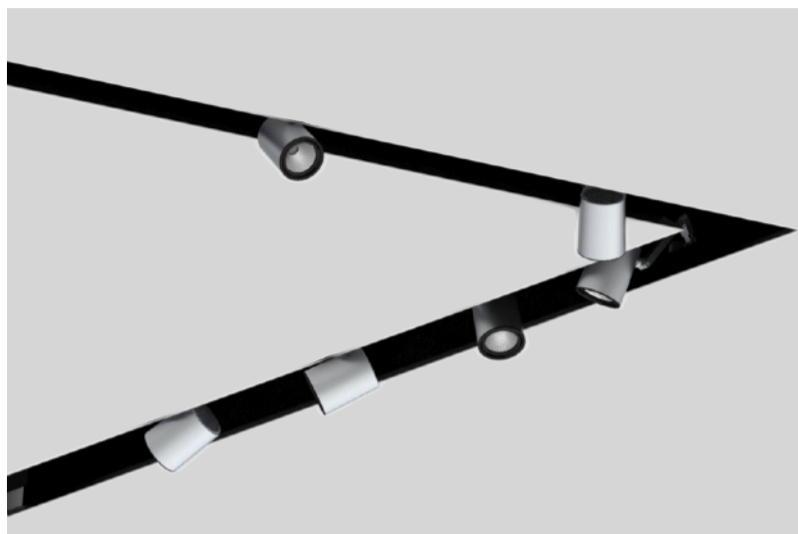


EDGE

Knife-Edge System



FEATURES

Seamless, sharp-edged architectural feature that provides a clean-cut solution for any ceiling.

EDGE is field cuttable or factory cut to length.

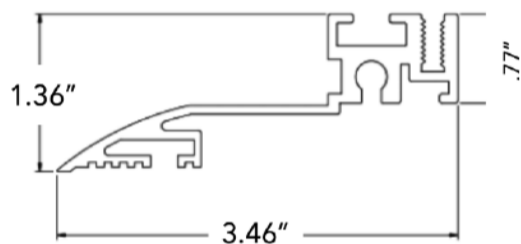
Extruded aluminum that can be curved (consult factory).

Plaster-in precision knife edge.

Use with a variety of articulating arm spots and LED linear tape options.

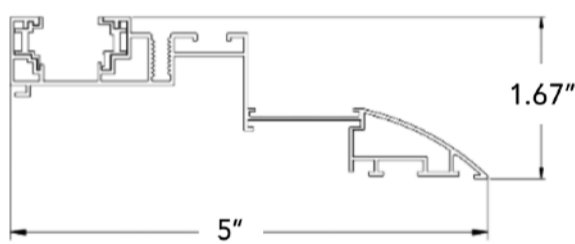
Spots range from 8w (737lm) to 40W (3500lm).

PROFILE SPECIFICATIONS



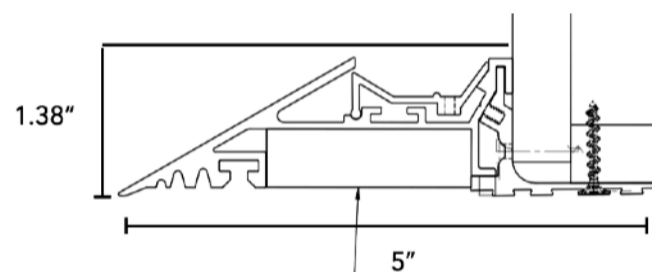
EDG-3SP

Use with EDGE SPOT fixtures



EDG-5SP

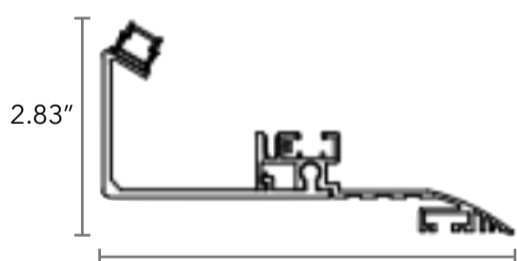
Use with EDGE SPOT fixtures



EDG-LL

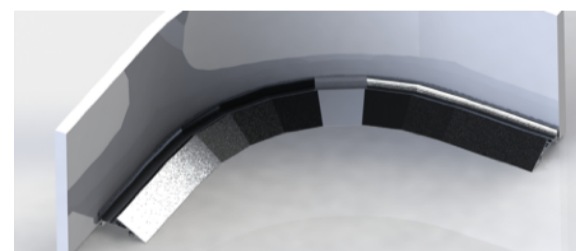
Use with Linear LED fixtures

This profile can be curved (consult factory for details)

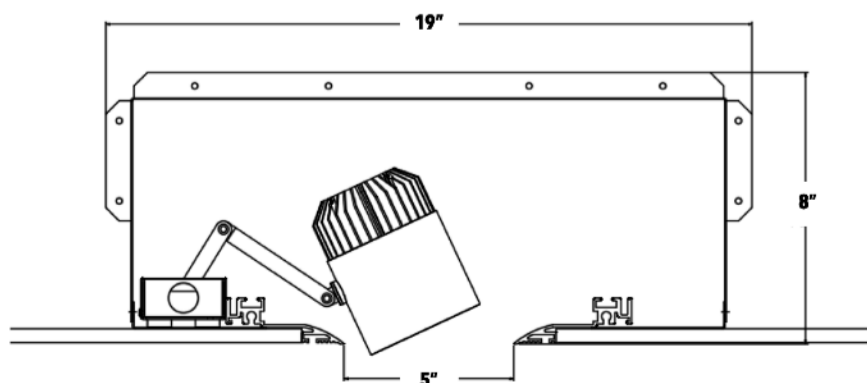


EDG-5SP-LL

Use with EDGE SPOT fixtures and Linear LED Tape



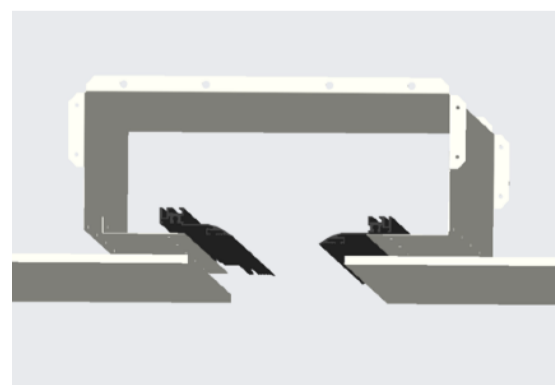
EDG-LL-RE



EDG-SLOT

EDGE SLOT CHANNEL

Use with EDGE SPOT



EDGE

Knife-Edge System



FIXTURE OPTIONS

Profile	Shape	Length	Finish
EDG-3SP	ST Straight	___ Length in feet	AN Anodized
EDG-5SP	WC With Corners	___ X ___ X ___ X ___	WH White
EDG-5SP-LL	RE* Radius/Curved		BL Black
EDG-LL¹			
EDG-SLOT²	*EDG-LL Profile Only		



¹Drawings are required for all radius and custom shapes

²Size of channel can be customized. Consult Factory

LINEAR TAPE OPTIONS			
	CCT		OUTPUT
EDTP	27K	2700K	LW 1.5W/Ft
	30K	3000K	ST 4W/Ft
	35K	3500K	MD 6W/Ft
	40K	4000K	HO 8.8W/Ft
	WD	Warm Dim	CO Custom
	TW	Tunable White	
	RGB	Color Changing	

Driver	
ELV	ELV/TRIAC Phase Cutting 3%
D10	0/1-10V (100% - 1%)
P01	Premium Driver 0.1% LOG

SEE EDGE SPOT SPEC SHEET

EDG-3SP EDG-5SP	See EDGE SPOT spec sheet		
EDSP	10W	737Lm	27K 2700K
	15W	1142Lm	30K 3000K
	20W	1669Lm	35K 3500K
	25W	2114Lm	40K 4000K
	30W	2548Lm	WD Warm Dim
	40W	3396Lm	TW Tunable White



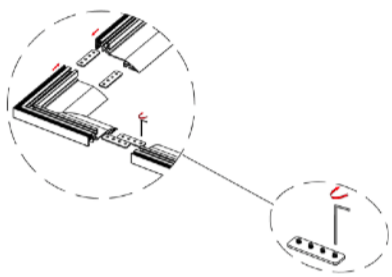
EDGE

Knife-Edge System

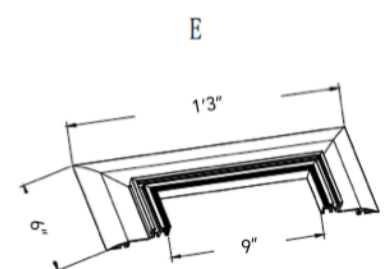
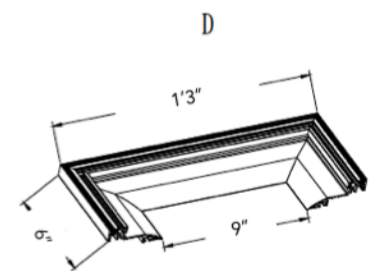
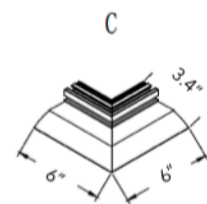
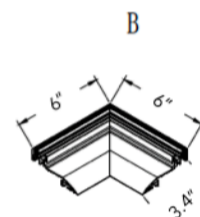
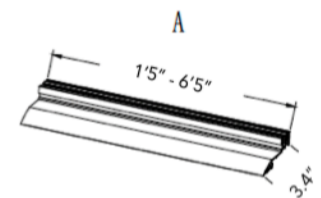
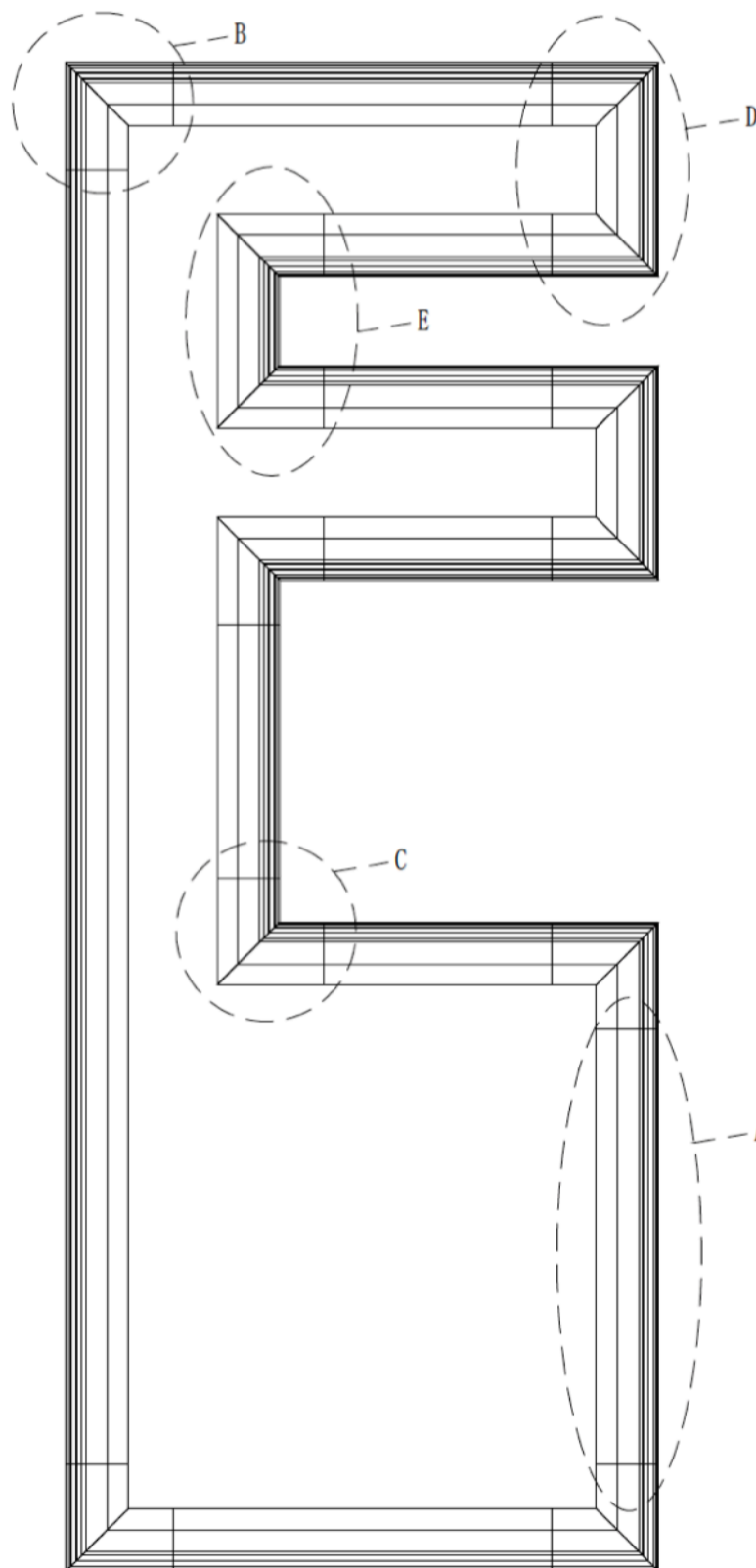


CORNER DETAIL

Corners will be determined by the factory based on the project drawings



Aligner Brackets / Joiner

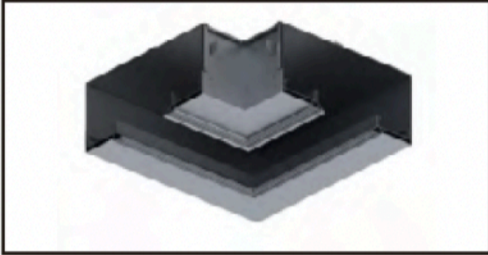


EDGE

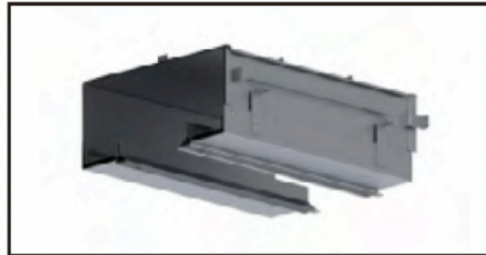
Knife-Edge System



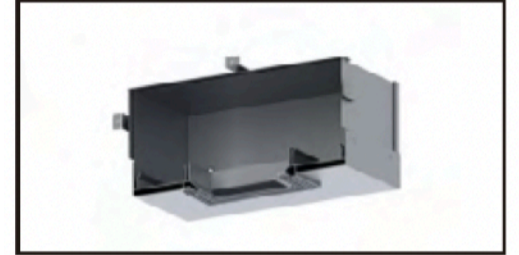
SLOT SYSTEM DETAIL



L-Corner Inside / Outside



Straight section



End Cap

