

PROJECT:

TYPE:

QTY:

# CH-STD-S-1707



Features: A Small, versatile, streamlined extrusion profile perfect for direct and indirect lighting applications.

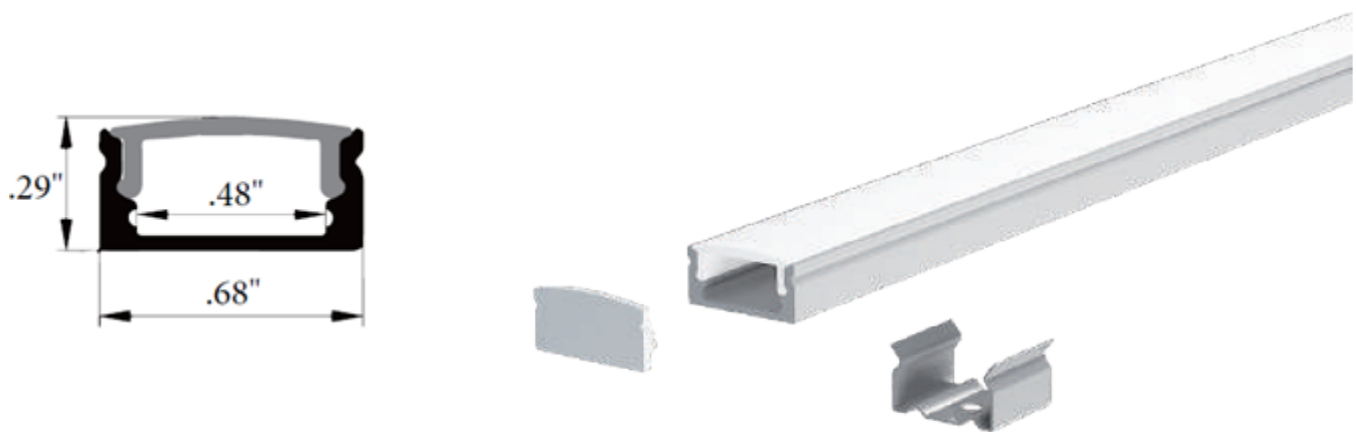
Compatible with our dry LED product and some wet options.

Mounting options: Direct Mount, Standard clips

Finish Options: Silver (SV), Black (BK), White (WH), with custom RAL finishes available upon request.

Lens Options: Clear, Frosted, Diffused.

## SPECIFICATIONS



### Ordering Code:

Series	Finish	Mounting	Lens	Channel Length
CH-STD-S-1707	<b>SV</b> Silver	<b>DM</b> Direct Mount	<b>CL</b> Clear	<b>UC</b> Uncut (98.43")
	<b>BK</b> Black	<b>CP</b> Clips	<b>FR</b> Frosted	<b>CT</b> Cut (2"-98.43")
	<b>WH</b> White		<b>DF</b> Diffused	
	<b>RAL#</b> Custom Finish			

Ordering Code Example: CH-STD-S-1707-SV-DM-CL-UC

